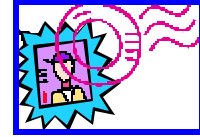


STAMPS FOR MISSION NEW GUIDELINES FOR STAMPS FOR MISSIONS



Stamp Companies are not buying common stamps about the size of ordinary flag stamps. Go through your envelopes and choose the large commemoratives, i.e. Disney, Wonder of America, Reagan, aircraft, Judy Garland, Gee's quilt, etc... of any denomination. CUT around these stamps leaving 1/4-1/2 inch of single thickness envelope with the stamp. This protects the perforations which is most important. Foreign stamps small and large are needed. Please Separate these from U.S. commemorative. Foreign stamps on the envelope are great also!

There are some stamps which are slightly larger than flags but not as large as commemoratives. If they are above 39 cents, then save them. For example: the violet dove stamps are 39 cents but the green dove stamps are 63 cents. Save the green do not save the violet!

DO NOT SEND THESE STAMPS! Bulk, Non-Profit or Metered Mail, Flags, Madonna's, Snowflakes, Vegetables, Flowers, Birds, or Pre-sorted first class stamps.

You can always call or email Jessica Fitzgerald jessica@pcusa-peva.org or 757 397-7063 ext 308 or you may contact Peggy Reinhold 540-674-6833 or RWReinholds@cs.com.

We can only continue the Stamps for Mission Project if the guidelines are followed. It takes too much time to sort through the stamps. Please help us make this project run smoothly. The Congolese want to hold a continuing education event for pastors and lay preachers in a primitive part of the Congo and cannot do it without our help. A pastor working on his doctorate so he can teach in the Seminary does not have the funds to finish his studies without our help. Equipment at the press needs replacing. They have saved several thousand but have several more to purchase a press which will keep them print Christian Education materials. So we hope to be able to continue with your help.

